

PROSTHETICS

DENTAL CATALOG

THE FIRST IMPRESSION COUNTS

COLTENE primarily associates prosthetics with precision impression materials, which has been one of the company's core expertise since its foundation. With Coltex/Coltoflax, an extensive impression programme was developed back in the early 1970s, which is still valued by renowned prosthodontists to this day. The launch of PRESIDENT the first A-Silicone on the market in 1975 is viewed as a milestone in the development of high precision dental impression materials.

Today addition cross-linking impression materials are scientifically recognised as the gold standard and are indispensable in the dental practice. The development of practical cartridge systems which significantly simplified bubble-free mixing of impression materials also contributed to their success.

Thanks to the use of 'supertensides' with the introduction of the premium A-Silicone AFFINIS in 2001, impression-taking in the moist environment improved enormously. The outstanding surface affinity and optimised flow properties of AFFINIS ensure perfect impressions, even under the most difficult conditions.

For over two decades, many dentists swear by the SPEEDEX brand. Around 400 mil. impressions have been taken over

this period that underline the trust placed in COLTENE's competence and expertise. The worldwide success of SPEEDEX C-Silicones lies in the outstanding mix of economy and product properties similar to those of A-Silicone.

Impression materials from COLTENE belong to today's globally leading products. Special formulas allow precise impressions to be fabricated quickly and easily. Thanks to the wide product range, the user can utilise the right material for every indication.



COMPANY

COLTENE is a global leader in the development, manufacture and sale of consumables and small-size equipment for dental treatment applications.

The Dental Group offers a wide range of products, encompassing six segments – solutions for almost all dental treatments. The complete endodontology programme includes root canal preparation with files and rinsing solutions, obturation and post systems. The next extensive range is centred entirely on restorative filling therapy. This particularly includes temporary and permanent filling materials, as well as adhesive systems and polymerisation lamps. Prosthetics represents a further main area. It includes a wide spectrum of condensation and addition cross-linking impression materials. The segments of treatment aids, infection control and rotating instruments round off the programme.

COLTENE has time and time again developed pioneering innovations for over 50 years, and ROEKO for over a 100 years who offer the user first grade dental solutions.

Today the COLTENE Group operates production facilities in Switzerland, Germany, Hungary, Brazil and the USA. It maintains a worldwide sales network with its own subsidiaries and distribution partners in over 120 countries. COLTENE therefore serves dentists, dental technicians, opinion leaders and universities with tailored quality products and services – worldwide.

www.coltene.com

HISTORY

1910 1920 1930 1940 1950 1960



ENDODONTICS

1962	ParaPost
1990	ParaPost X-System
1997	ROEKO GP/PP Top color
1999	RoekoSeal Automix 2000
2000	ParaPost Fiber White
2004	GuttaFlow
2011	HyFlex CM



RESTORATION

1978	Oralloy
1983	BRILLIANT
1988	BRILLIANT Esthetic Line
1991	A.R.T. Bond
1998	SYNERGY
2001	ParaCore, MIRIS
2006	SYNERGY D6
2007	One Coat 7.0
2008	MIRIS 2
2011	COMPONEER



PROSTHETICS

1974	Coltex/Coltoflax
1975	PRESIDENT
1980	Rapid
1992	SPEDEX
1995	PRESIDENT microSystem
2000	Jet Bite
2001	AFFINIS
2005	JET BLUE BITE
2006	AFFINIS PRECIOUS

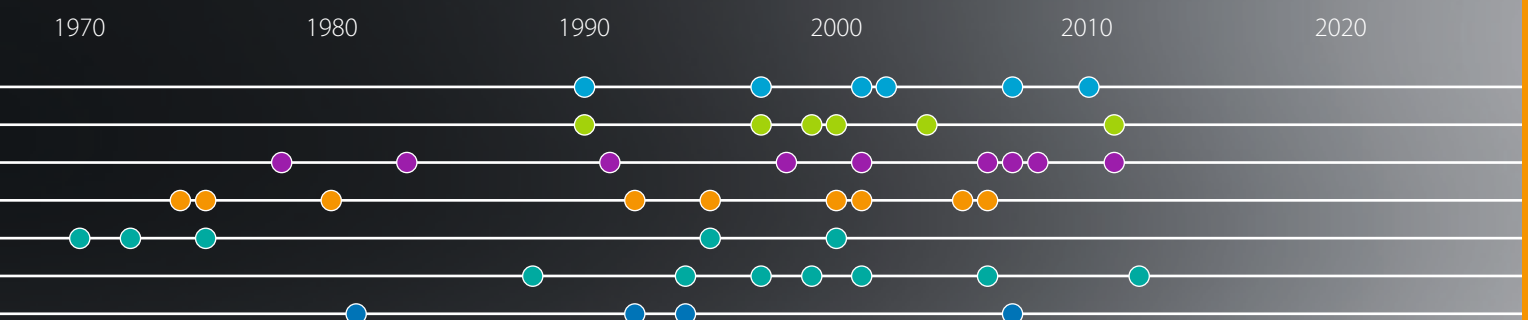
COMPANY FOUNDATIONS

1910	ROEKO GmbH & Co.KG, DE
1953	Vigodent, BR
1956	Whaledent Inc., US
1963	COLTENE AG, CH



MERGERS

1990	Whaledent Inc., US
1997	HYGENIC Dental, US
2001	DIATECH, CH
2002	ROEKO, DE
2007	CEI, US
2010	Vigodent, BR



TREATMENT AIDS

1955	Luna
1964	Parotisroll
1970	Cotton pellets
1972	Surgitip
1975	Gelatamp
1995	Dental Dam Silicone non latex
2000	Flexi Dam non latex



INFECTION CONTROL

1988	BioSonic UC 1 Cleaner
1994	Steri-Quick
1997	Protecta Quick non latex
1999	Simplex-Plus Maxi
2001	BioSonic US 100 Scaler
2006	BioSonic UC 125
2012	Protecta Active Carbon



ROTARY INSTRUMENTS

1981	ML Diamonds
1992	Carbides
1994	Top Spin
2007	Speedster

**INDICATION
PRODUCT TYPE**
**FIELD OF APPLICATION
PROPERTIES**
PRODUCT NAME

RETRACTION

PREPARATION WITH CORDS

Retraction Cords	Air-jet textured	ROEKO Comprecord	10
	Braided / twisted, impregnated / not impregnated	ROEKO Retracto	
	Twisted with malleable, fine wire-core, impregnated / not impregnated	ROEKO Stay-put	11
Accessories	For placement of retraction cords	Retraction Cord Packer	11

PREPARATION WITH SILICONE

Silicone foam	Expanding and addition-curing silicone foam, time-saving, non-traumatic	Magic FoamCord	12
Accessories	Standard compression caps, to stop bleeding and to dry tooth stumps	ROEKO Comprecap	13
	Anatomically shaped compression caps, to stop bleeding and to dry tooth stumps	ROEKO Comprecap Anatomic	13

IMPREGNATION

Pretreatment of gingiva	To pretreat the gingiva and impregnation of retraction cords, with 10% aluminium chloride hexahydrate	Gingiva Liquid	13
--------------------------------	---	----------------	----

BITE REGISTRATION

A-Silicone	Mousse-like, smooth consistency with very short, patient-friendly intraoral setting time, good milling and cutting properties	JET BLUE BITE fast JET BLUE BITE superfast	16
	Classical bite registration material, ideal stability and simple handling, good milling and cutting properties	Jet Bite	17
	Accessories for microSystem and System 50	JET BLUE BITE, Jet Bite	17

IMPRESSION

A-SILICONE

		2S	1S	MP	FUI	FI		
Wash material	Premium A-Silicone, low and medium viscosity, hydrocolloid-like property, innovative surface affinity with very low contact angle, autoclavable	●	●	○	●	○	AFFINIS light body / fast AFFINIS regular body / fast	19
	Latest generation with especially good flow properties, metallic colour (gold and silver) for improved readability, autoclavable	●	●	○	●	○	AFFINIS PRECIOUS light body AFFINIS PRECIOUS regular body	20
	Classical A-Silicone, low and medium viscosity, surface-activated, from the tube or cartridge	●	○	○	●	○	PRESIDENT light body PRESIDENT regular body	23
Tray material	Premium putty from 380 ml cartridge, smooth consistency with high final hardness, autoclavable	●	●	○	○	○	AFFINIS putty	22
	Smooth consistency from the pot with medium final hardness, autoclavable	●	●	○	○	○	AFFINIS putty soft / fast	22

INDICATION PRODUCT TYPE	FIELD OF APPLICATION PROPERTIES						PRODUCT NAME	
		2S	1S	MP	FUI	FI		
Tray material	Especially smooth consistency from the pot with medium final hardness, autoclavable	●	●	○	○	○	AFFINIS putty super soft	22
	Viscous consistency from the cartridge with medium final hardness, innovative surface affinity, autoclavable	○	●	○	●	●	AFFINIS heavy body / fast	21
	Classical putty from the pot, smooth consistency with high final hardness	●	●	○	○	○	PRESIDENT putty	24
	Smooth consistency from the pot with medium final hardness	●	●	○	○	○	PRESIDENT putty soft / fast	24
	Viscous consistency from the cartridge with medium final hardness	○	●	○	●	●	PRESIDENT heavy body	24
Monophase material	Medium viscosity consistency with low final hardness, specifically for single phase impressions	●	●	●	●	●	AFFINIS MonoBody	21
C-SILICONE								
Wash material	Premium C-Silicone with A-Silicone quality, low to medium viscosity consistency, 7-day dimensional stability, variable setting time by dosing the activator, surface-active	●	●	○	●	○	SPEEDEX light SPEEDEX medium	28
	Low viscosity wash material, outstanding mixing control with colour change during mixing, special application aid	●	●	○	●	○	Rapid Liner	29
	Classical C-Silicone family with four different consistencies for every indication	●	●	○	●	○	Coltex extrafine, Coltex fine Coltex medium	30
Tray material	Premium C-Silicone putty from the pot	●	●	○	○	○	SPEEDEX putty	28
	Classical putty in the system pack	●	●	○	○	○	Rapid putty	29
	Classical putty in the system pack, smooth consistency with low final hardness	●	●	○	○	○	Rapid putty soft	29
	Classical putty with high final hardness	●	●	○	○	○	Coltoflax putty	30
	Classical putty	●	●	○	○	○	Coltex compact	
Activator							SPEEDEX, Rapid, Rapid Liner, Coltex mix, Coltoflax mix, Coltex extrafine mix, PSI Cat.	31
Accessories							A-Silicone, C-Silicone	25

IMPRESSION TECHNIQUE

2S	Two-step impression
1S	One-step impression
MP	Monophase impression
FUI	Functional impression
FI	Fixation impression

PRESSURE-SPOT IDENTIFICATION

C-SILICONE

Ideal material based on polysiloxane for simple and reliable identification of pressure spots	Pressure Spot Indicator – PSI	30
Activator	PSI CATALYST	30

INDICATION PRODUCT TYPE	FIELD OF APPLICATION PROPERTIES	PRODUCT NAME
----------------------------	------------------------------------	--------------

LABORATORY

GINGIVA REPRODUCTION

A-Silicone	A-Silicone gingival mask from the Automix cartridge for precise registration of the gingival contours, natural and aesthetic colouring	GI-MASK Automix New Formula	34
C-Silicone	C-Silicone, gingival mask, Handmix	GI-MASK	

LABORATORY SILICONES

Silicone putty	Silicone putty with high final hardness, for keys, stamps and block-outs	Lab-Putty	35
	Silicone putty with a very high final hardness of approx. 90 Shore A, high heat resistance (300 °), for fabricating soldering models	Lab-Putty hard	35

WAXES

Modelling and plate waxes Bite rims and templates	Modelling and plate waxes, bite rims and templates in horseshoe shape. For protecting the functional margin or expanding the impression tray and for model fabrication	HYGENIC waxes	37
--	--	---------------	----

Gingiva Retraction

Impregnation

Retraction Cords

Prosthetics

ROEKO Comprecord



Comprecord is an air texturized retraction cord with a stable structure and a great total volume which makes Comprecord highly absorbent. The cord has a pliable structure that allows Comprecord to adapt easily to the sulcus without fraying and shedding fibers.

Advantages of Comprecord:

- pliable structure
- outstanding absorbency
- easy to place in the sulcus
- does not fray and shed fibers
- color coded for easy distinction of sizes

Non impregnated, 225 cm		
0	x-fine	515 000
1	fine	515 001
2	medium	515 002
3	thick	515 003

ROEKO Retracto



Braided		
Impregnated with aluminium chloride hexahydrate, 225 cm		
1	fine	510 001
2	medium	510 002
3	thick	510 003

Twisted		
Impregnated with aluminium chloride hexahydrate, 225 cm		
1	fine	522 001
2	medium	522 002
3	thick	522 003

Non impregnated, 225 cm		
0	x-fine	511 000
1	fine	511 001
2	medium	511 002
3	thick	511 003

Non impregnated, 225 cm		
0	x-fine	523 000
1	fine	523 001
2	medium	523 002
3	thick	523 003

ROEKO Stay-put

Stay-put combines the advantages of a braided retraction cord with the adaptability of a fine metal filament. The pliable core is so effective that the cord is not only easy to place in the sulcus but it stays there.

Non impregnated, 183 cm

0 x-fine	521 000
1 fine	521 001

2 medium	521 002
3 thick	521 003



Impregnation with aluminium chloride hexahydrate. Stay-put impregnated is colour coded for easy distinction of sizes and to contrast well with the gingiva. Impregnated with aluminium chloride hexahydrate, 183 cm.

impregnated, 183 cm

0 x-fine	521 020
1 fine	521 021

2 medium	521 022
3 thick	521 023

**ROEKO
Retraction Cord Packer****Retraction Cord Packer**

Execution smooth	520 000
Execution serrated	520 001

Magic FoamCord

Magic FoamCord is the first expanding PVS material designed for easy and fast retraction of the sulcus without the potentially traumatic and time consuming packing of retraction cord.



Benefits

- Atraumatic method of temporary gingival retraction
- Easy and fast application directly to the sulcus without pressure or packing
- Comfortable to the patient
- No haemostatic chemicals to contaminate the impression site – no need for extensive rinsing
- Outstanding retraction for perfect impressions

2 min*: Foaming action complete; 5 min*: Material completely cured.
Total Expansion 160%



Magic FoamCord Intro Kit	6735
Cartridges	2 x 50 ml
Mixing Tips Yellow	30 pcs
Oral Tips Yellow	30 pcs
Comprecap anatomic	45 pcs

Magic FoamCord Refill	6737
Cartridges	2 x 50 ml

System 50 Accessories		
Mixing Tips Yellow	40 pcs	6550
Oral Tips Yellow	100 pcs	6555

ROEKO Comprecap

ROEKO Comprecap compression caps stop bleeding naturally – by compression and control moisture. The use is simple and supports impression preparation regardless of the retraction technique.

Set	530 000
Content 1/3/5	150 pcs

Single Sizes		
1	120 pcs	530 008
1	600 pcs	531 008
3	120 pcs	530 010
3	600 pcs	531 010
5	60 pcs	530 014
5	400 pcs	531 014

**Comprecap anatomic**

Are anatomically formed compression caps with semicircled shaped spaces on two opposite sides and can therefore be easily placed on adjacent teeth.

Set	531 299
Content 1/3/5	120 Stk.

Single Sizes		
1	120 pcs	531 201
3	120 pcs	531 203
5	60 pcs	531 205

ROEKO Gingiva Liquid

An astringent, styptic solution with 10% aluminium chloride hexahydrate. No cardiovascular problems as it does not contain Epinephrine. For treatment of the gingiva before taking an impression and to impregnate retraction cords.

ROEKO Gingiva Liquid	524 000
Content	1 × 10 ml

Impression
A-Silicone

Prosthetics



AFFINIS®

The innovative surface affinity and optimised flow properties of AFFINIS ensure perfect impressions. The premium A-Silicone excels by virtue of fast wetting of the tooth and gingiva. Even under the most difficult moist conditions, AFFINIS flows outstandingly like a hydrocolloid into the deepest sulcus without applying pressure. Thanks to the self-contouring consistency, air voids are absent and bubbles or distortions can be virtually eliminated. The thixotropic property means that AFFINIS has adequate stability and does not drip from the tooth.

PRESIDENT®

PRESIDENT the first A-Silicone has impressed for decades with its superior quality as one of COLTENE's traditional products. PRESIDENT wash materials are stable, yet extremely free-flowing under pressure to capture all details cleanly. Impressions are precise, even under the most difficult conditions thanks to their high tear strength.



Brief description

AFFINIS®

Premium A-Silicone: top quality
Universal product range: putty, tray, 6 x wash
Dosage form in cartridges: 25 ml, 50 ml, 75 ml, 380 ml
Innovative consistencies: AFFINIS PRECIOUS
Optimal flow properties: top precision
Top dimensional stability: fitting accuracy
Automix: simple handling
Autoclavable: protection against infections
Smallest contact angle: best wettability

Consistencies

WASH

light body
 light body fast
 PRECIOUS light body
 regular body
 regular body fast
 PRECIOUS regular body

TRAY

MonoBody
 heavy body
 heavy body fast
 putty soft
 putty super soft
 putty soft fast
 putty System 360

PRESIDENT®

Classical A-Silicone: continuously optimised
Two forms of mixing: Automix und Handmix
Top dimensional stability: high quality
Optimal flow properties: high precision
Dosage form in cartridges: 25 ml, 50 ml, 75 ml, 380 ml
Dosage form in tubes: Base and Activator each 53 ml

WASH

light body
 regular body

TRAY

heavy body
 putty
 putty soft
 putty soft fast

JET BLUE BITE



Exceptional Handling with firm, accurate, fast set

JET BLUE BITE bite registration material flows with a smooth whipped-cream consistency exactly where you want it in a predictable quantity and ideal ribbon pattern. It offers a fast oral setting-time and sets rock hard for greater accuracy but is still flexible enough for easy trimming or cutting. The superior handling characteristics are the key for a perfect occlusal fit on the first try.

- Stays exactly where you want it
- No resistance to closure, no rebound!
- Rock hard for accuracy, yet flexible for easy trimming
- Pick your ideal speed:

Fast 30 s working time
40 s oral setting time

Superfast 20 s working time
30 s oral setting time

JET BLUE BITE fast



JET BLUE BITE fast 50 ml Single Pack	6491
Cartridge	1 × 50 ml
Mixing Tips Pink	6 pcs
Spreader Tips	6 pcs

JET BLUE BITE fast 50 ml Refill	6495
Cartridge	4 × 50 ml
Mixing Tips Pink	12 pcs
Spreader Tips	12 pcs

JET BLUE BITE superfast



JET BLUE BITE superfast 50 ml Single Pack	6493
Cartridge	1 × 50 ml
Mixing Tips Pink	6 pcs
Spreader Tips	6 pcs

JET BLUE BITE superfast 50 ml Refill	6497
Cartridge	4 × 50 ml
Mixing Tips Pink	12 pcs
Spreader Tips	12 pcs

Jet Bite



Easy handling and ideal stability facilitate the bite registration. The dental technician appreciates how well the material can be formed and trimmed.

Jet Bite microSystem 6440	
Cartridges	4 × 25 ml
Mixing Tips Clear	20 pcs
Spreader Tips	20 pcs

Jet Bite microSystem 6450	
Refill package cartridges	20 × 25 ml

Jet Bite 50 ml 6400	
Cartridges	2 × 50 ml
Mixing Tips Pink	12 pcs
Spreader Tips	12 pcs

Jet Bite 50 ml 6410	
Refill package cartridges	20 × 50 ml

Jet Bite Accessories



microSystem		
microSystem Dispenser MK II	1 pc	6270
Mixing Tips Clear	40 pcs	6214
Mixing Tips Clear	100 pcs	6215
Spreader Tips	100 pcs	6223

50 ml System		
Dispenser 50/75 ml	1 pc	6900
Mixing Tips Pink	40 pcs	6551
Spreader Tips	100 pcs	6223



Affinity on moist tooth structure



AFFINIS – a bench mark in impression technology

AFFINIS, an A-Silicone, differs in three characteristic features from other surface activated impression materials:

Innovative surface affinity

The differentiating element of AFFINIS is a fast and innovative affinity of mixed material to moist tooth structure and tissue (gingiva).

Optimized flow

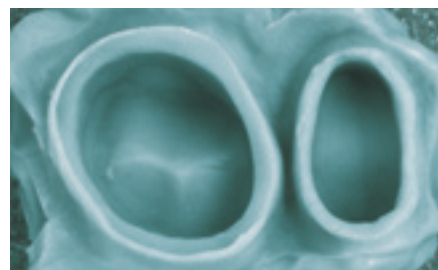
AFFINIS however, based on its surpassing combination of additives which are capable of breaking material structures, displays a very low barrier to flow (self-contouring consistency). At the same time, the mixed material is optimal thixotropic not to drip off the preparation.

Better models

AFFINIS, due to its synergistic and extremely active surfactant system, displays a fast and outstanding wetting by water of the set impression. When pouring the gypsum, the dental technician will appreciate these properties.

First Ever Autoclavable Impressions

All AFFINIS and AFFINIS PRECIOUS impressions are now autoclavable at 134°C without the loss of its well-known and appreciated AFFINIS physical properties. The new autoclavable AFFINIS impression material with a heat-resistant impression tray and special adhesive provides an integrated system for completely new possibilities in prevention. AFFINIS impressions – not only clean, but also sterile.



A no void AFFINIS impression as seen by the dentist

AFFINIS light body

AFFINIS light body microSystem	6500
Cartridges	4 × 25 ml
Mixing Tips Green	20 pcs
Oral Tips	20 pcs

AFFINIS light body 50 ml	6501
Cartridges	2 × 50 ml
Mixing Tips Yellow	12 pcs

AFFINIS light body microSystem	6575
Refill package cartridges	20 × 25 ml

AFFINIS light body 50 ml	6580
Refill package cartridges	20 × 50 ml

AFFINIS fast light body

AFFINIS fast light body microSystem	6600
Cartridges	4 × 25 ml
Mixing Tips Green	20 pcs
Oral Tips	20 pcs

AFFINIS fast light body 50 ml	6601
Cartridges	2 × 50 ml
Mixing Tips Yellow	12 pcs

AFFINIS fast light body microSystem	6675
Refill package cartridges	20 × 25 ml

AFFINIS fast light body 50 ml	6680
Refill package cartridges	20 × 50 ml

AFFINIS regular body

AFFINIS regular body microSystem	6510
Cartridges	4 × 25 ml
Mixing Tips Clear	20 pcs
Oral Tips	20 pcs

AFFINIS regular body 50 ml	6511
Cartridges	2 × 50 ml
Mixing Tips Yellow	12 pcs

AFFINIS regular body microSystem	6577
Refill package cartridges	20 × 25 ml

AFFINIS regular body 50 ml	6582
Refill package cartridges	20 × 50 ml

AFFINIS fast regular body

AFFINIS fast regular body microSystem	6610
Cartridges	4 × 25 ml
Mixing Tips Clear	20 pcs
Oral Tips	20 pcs

AFFINIS fast regular body 50 ml	6611
Cartridges	2 × 50 ml
Mixing Tips Yellow	12 pcs

AFFINIS fast regular body microSystem	6677
Refill package cartridges	20 × 25 ml

AFFINIS fast regular body 50 ml	6682
Refill package cartridges	20 × 50 ml

AFFINIS PRECIOUS

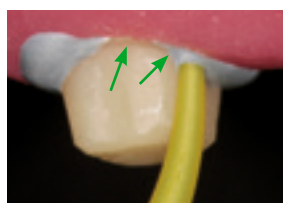


Superior flow properties where it counts – In the mouth...

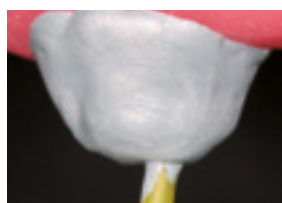
AFFINIS PRECIOUS polyvinylsiloxane (PVS) wash materials have a contact angle of only 10°. Its superior flow properties allow the impression material to easily capture all critical surface detail of the preparations in a wet environment.

...and in the lab

AFFINIS PRECIOUS was developed to produce accurate results in the mouth and in the lab. The wettability allows the wet gypsum to flow more easily into the impression, producing more accurate stone models. An accurate model is the key for the lab technician to create proper fitting restorations.



AFFINIS PRECIOUS flows directly into the sulcus preventing air entrapments.



Thixotropic properties prevent slumping and dripping.



AFFINIS PRECIOUS wash materials produce accurate, void free impressions.

AFFINIS PRECIOUS light body / regular body



AFFINIS PRECIOUS light body 50 ml	6775
Cartridges	2 × 50 ml
Mixing Tips Yellow	12 pcs

AFFINIS PRECIOUS light body mS 25 ml	6779
Cartridges microSystem	4 × 25 ml
Mixing Tips Green	20 pcs
Oral Tips	20 pcs

AFFINIS PRECIOUS regular body 50 ml	6776
Cartridges	2 × 50 ml
Mixing Tips Yellow	12 pcs

AFFINIS PRECIOUS regular body mS 25 ml	6780
Cartridges microSystem	4 × 25 ml
Mixing Tips Clear	20 pcs
Oral Tips	20 pcs

AFFINIS MonoBody

AFFINIS MonoBody is tissue friendly and neutral in taste without side effects or patient discomfort. After a short oral setting time of 3.30 min the AFFINIS impression can be easily removed without residue or distortion. The impression is desinfectable without dimensional changes. The high elastic recovery of 99.75 % and dimensional change of just 0.2 % are the essential characteristics for accurate restorations.

AFFINIS MonoBody 75 ml	6547
Cartridges	2 × 75 ml
Mixing Tips Turquoise	8 pcs

AFFINIS MonoBody 75 ml	6587
Refill package cartridges	20 × 75 ml

AFFINIS System 360 MonoBody Starter Kit	6480
Base und Catalyst	1 × 380 ml
Fixation Ring	1 pc
Dynamic Mixing Tips Yellow	10 pcs

AFFINIS System 360 MonoBody	6482
Refill package Base und Catalyst	2 × 380 ml
Fixation Ring	1 pc

AFFINIS heavy body

AFFINIS heavy body 75 ml	6520
Single pack Cartridges	2 × 75 ml
Mixing Tips Turquoise	8 pcs

AFFINIS heavy body 75 ml	6585
Refill package cartridges	20 × 75 ml

AFFINIS heavy body 50 ml	6590
Single pack Cartridges	2 × 50 ml
Mixing Tips Turquoise	6 pcs

AFFINIS heavy body 50 ml	6595
Refill package cartridges	20 × 50 ml

AFFINIS System 360 heavy body Starter Kit	6485
Base und Catalyst	1 × 380 ml
Fixation Ring	1 pc
Dynamic Mixing Tips Yellow	10 pcs

AFFINIS System 360 heavy body	6487
Refill package Base und Catalyst	2 × 380 ml
Fixation Ring	1 pc

AFFINIS fast heavy body

AFFINIS fast heavy body 75 ml	6620
Cartridges	2 × 75 ml
Mixing Tips Turquoise	8 pcs

AFFINIS fast heavy body 75 ml	6685
Refill package cartridges	20 × 75 ml

AFFINIS fast heavy body 50 ml	6650
Single pack Cartridges	2 × 50 ml
Mixing Tips Turquoise	6 pcs

AFFINIS fast heavy body 50 ml	6652
Refill package cartridges	20 × 50 ml

AFFINIS System 360 putty

The new AFFINIS System 360 putty is truly kneadable, whose strong “firm body” is immediately noticeable once dispensed from the mixing unit with no signs of stickiness. The putty material can be manually-kneaded immediately in the hands without sticking to the gloves. This facilitates individual pre-forming of the tray material based on the clinical situation. The dentist is comforted with a reliable, automatically-mixed putty material for successful precision impressions.

AFFINIS System 360 putty Starter Kit		6471
Base und Catalyst	1 × 380 ml	
Fixation Ring	1 pc	
Dynamic Mixing Tips Yellow	10 pcs	

AFFINIS System 360 putty Single Pack		6472
Refill package Base and Catalyst	2 × 380 ml	
Fixation Ring	1 pc	

AFFINIS putty soft / fast

AFFINIS putty soft is a standard putty in the AFFINIS putty range. The compatible consistencies of the base and catalyst ensure for quick and easy mixing.

AFFINIS putty soft		6530
Base und Catalyst	2 × 300 ml	

AFFINIS fast putty soft		6531
Base und Catalyst	2 × 300 ml	

AFFINIS putty super soft

AFFINIS putty super soft is smooth, quick and easy to mix. With a viscosity similar to heavy body, formulated to flow and guide AFFINIS wash materials accurately to clinically important surfaces and with ideal mixing and oral setting times, the putty achieves perfect impressions without voids and margin distortions.

AFFINIS putty super soft		6535
Base und Catalyst	2 × 300 ml	

System 50/75 Accessories		
Dispenser 50/75 ml	1 pc	6900
Mixing Tips Yellow	40 pcs	6550
Mixing Tips Pink	40 pcs	6551
Mixing Tips Turquoise	40 pcs	6552
Oral Tips Yellow	100 pcs	6555
Spreader Tips	100 pcs	6223
Plunger, 75 ml	1 pcs	6985

System 360 Accessories		
Dynamic Mixing Tips Yellow	40 pcs	6162

microSystem Accessories		
microSystem Dispenser MK II	1 pc	6270
Mixing Tips Clear	40 pcs	6214
Mixing Tips Clear	100 pcs	6215
Mixing Tips Green	40 pcs	6202
Mixing Tips Green	100 pcs	6205
Oral Tips	100 pcs	6210
Spreader Tips	100 pcs	6223

AFFINIS fast putty soft		
Fixation Ring	1 pc	6163



PRESIDENT light body



PRESIDENT microSystem light body	6002
Cartridges	4 × 25 ml
Mixing Tips Green	20 pcs
Oral Tips	20 pcs

PRESIDENT light body	4626
Cartridges	2 × 50 ml
Mixing Tips Yellow	12 pcs

PRESIDENT microSystem light body	6005
Refill package cartridges	20 × 25 ml

PRESIDENT light body tube material	4667
Base und Catalyst	2 × 53 ml

PRESIDENT regular body



PRESIDENT microSystem regular body	6012
Cartridges	4 × 25 ml
Mixing Tips Clear	20 pcs
Oral Tips	20 pcs

PRESIDENT regular body	4627
Cartridges	2 × 50 ml
Mixing Tips Yellow	12 pcs

PRESIDENT microSystem regular body	6015
Refill package cartridges	20 × 25 ml

PRESIDENT regular body tube material	4717
Base und Catalyst	2 × 53 ml

PRESIDENT Putties



PRESIDENT putty	4617
Base und Catalyst	2 × 300 ml

PRESIDENT putty soft	4843
Base und Catalyst	2 × 300 ml

PRESIDENT fast putty soft	4632
Base und Catalyst	2 × 300 ml

PRESIDENT heavy body

PRESIDENT heavy body is surface-activated and thixotropic with fast pressure build up so that the wash material is easily driven into the critical areas.



PRESIDENT heavy body 75 ml	6712
Cartridges	2 × 75 ml
Mixing Tips Turquoise	8 pcs

PRESIDENT heavy body 75 ml	6715
Refill packages cartridges	20 × 75 ml

PRESIDENT System 360 heavy body Starter Kit	6100
Base und Catalyst	1 × 380 ml
Fixation Ring	1 pc
Dynamic Mixing Tips Yellow	10 pcs

PRESIDENT System 360 heavy body	6105
Base und Catalyst	2 × 380 ml
Fixation Ring	1 pc

PRESIDENT tube material



PRESIDENT heavy body tube material	4767
Base und Catalyst	2 × 53 ml

PRESIDENT light body tube material	4667
Base und Catalyst	2 × 53 ml

PRESIDENT regular body tube material	4717
Base und Catalyst	2 × 53 ml

PRESIDENT Impression Tray and Accessories

A patented system of intersecting ribs and rails provides unprecedented rigidity in a plastic tray. The anatomic form relieves the fitting and ensures a perfect impression.



PRESIDENT Impression Tray (transparent)				
Size 1 upper jaw large	12 pcs	C6901	Size 6 lower jaw small	12 pcs C6906
Size 2 lower jaw large	12 pcs	C6902	Size 7 quadrant UJ le./LJ ri.	12 pcs C6907
Size 3 upper jaw medium	12 pcs	C6903	Size 8 quadrant UJ ri./LJ le.	12 pcs C6908
Size 4 lower jaw medium	12 pcs	C6904	Size 9 anterior UJ/LJ	12 pcs C6909
Size 5 Upper jaw small	12 pcs	C6905		

PRESIDENT Impression Tray autoclavable (blue)				
Size 1 upper jaw large AC	12 pcs	C6950	Size 6 lower jaw small AC	12 pcs C6955
Size 2 lower jaw large AC	12 pcs	C6951	Size 7 quadrant UJ le./LJ ri. AC	12 pcs C6956
Size 3 upper jaw medium AC	12 pcs	C6952	Size 8 quadrant UJ ri./LJ le. AC	12 pcs C6957
Size 4 lower jaw medium AC	12 pcs	C6953	Size 9 anterior UJ/LJ AC	12 pcs C6958
Size 5 upper jaw small AC	12 pcs	C6954		

Coltopress	4422
Squeezing aid for tubes. Coltopress empties tubes without waste.	

Impression Syringes	4426
Impression syringes incl. 15 tips	3 pcs

	4428
Refill package tips	50 pcs

Adhesive	4410
Bottle	1 x 10 ml

Adhesive AC	4405
Bottle, autoclavable	1 x 10 ml

Mixing Pad	4412
	1 pc

Mixing Pads	4414
	10 pcs

Spatula	4415
	1 pc

Cutting Knife	4420
Universal	1 pc

System 50/75 Accessories		
Dispenser 50/75 ml	1 pc	6900
Mixing Tips Yellow	40 pcs	6550
Mixing Tips Pink	40 pcs	6551
Mixing Tips Turquoise	40 pcs	6552
Oral Tips Yellow	100 pcs	6555
Spreader Tips	100 pcs	6223
Plunger	1 pc	6985

microSystem Accessories		
microSystem Dispenser MKII	1 pc	6270
Mixing Tips Clear	40 pcs	6214
Mixing Tips Clear	100 pcs	6215
Mixing Tips Green	40 pcs	6202
Mixing Tips Green	100 pcs	6205
Oral Tips	100 pcs	6210
Spreader Tips	100 pcs	6223

System 360 Accessories		
Dynamic Mixing Tips Yellow	40 pcs	6162

Fixation Ring	1 pcs	6163

Impression

C-Silicone

Prosthetics

SPEEDEX®

SPEEDEX is a premium C-Silicone in A-quality. SPEEDEX has elastic recoverability and reproduction, which is otherwise only achieved by A-Silicones. As a result of the low shrinkage, impressions remain dimensionally stable and can be cast for up to 7 days without problems.

All consistencies of SPEEDEX are mixed with a Universal Activator. Processing is flexible by means of underdosing or overdosing. After just two minutes in the mouth the impression is fully set.



Brief description

SPEEDEX®

C-Silicone in A-Quality: top quality of the C-Silicones

High dimensional stability: up to 7 days

Variable processing time: depending on dosage of the activator

RAPID

All-in-one workstation: optimised to the user's needs

Basic product range: 2 × putty, 1 × wash

Mixing control: colour change during mixing

COLTOFLAX® / COLTEX®

First silicone from COLTENE: for every indication

Extensive range: 1 × putty, 4 × different consistencies

RAPID

Rapid, the C-Silicone with colour change for outstanding mixing control. The special wash material Rapid Liner changes colour with successful mixing. Dependable mixing and the practical dispensing system simplify precise impression-taking.

COLTOFLAX® / COLTEX®

With Coltoflax/Coltex began the success story of COLTENE silicones. A putty and four different consistencies, Coltoflax/Coltex offer an extensive product range. The right material for every indication and high quality are the factors that assure the right impression.

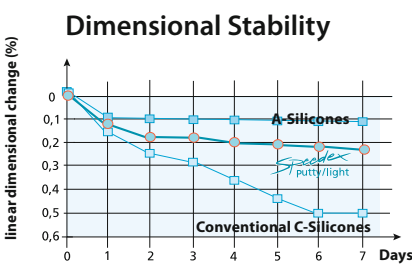
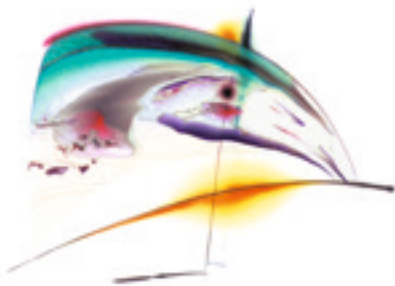


Consistencies

	WASH	TRAY
SPEEDEX®		
	light body medium body	putty
RAPID		
	Rapid Liner	Rapid Rapid soft
COLTOFLAX® / COLTEX®		
	Coltex extrafine Coltex fine Coltex medium	Coltoflax Coltex compact

Speedex

Speedex medium has outstanding wettability and excellent flow characteristics. Saliva and blood are displaced by Speedex medium and have no negative side effects. With the variable setting time of Speedex medium the important mucosal movements, which are necessary for the full and partial denture technique, can be taken very precisely. A perfect impression is the key for an accurate fitting denture.



High dimensional stability:
 models can be poured up to seven days after
 impression taking.

Speedex putty	4970
Single Package	910 ml

Speedex light body	4980
Single Package	140 ml

Speedex medium body	4986
Single Package	140 ml

Speedex Universal Activator	4990
Single Package	60 ml

Rapid

Simplicity and rationality are the trademarks of COLTENE Rapid. COLTENE Rapid provides the appropriate material for every application. And in addition, unparalleled aids ensuring excellent and reliable application of all system components. Optimal homogeneous control thanks to color change driving mixing.

Rapid System-Pack	4505
Putty	1 × 900 ml
Rapid Activator	1 × 40 ml
Dosing Spoon	1 pc
Liner	1 × 150 ml

Rapid	4515
Putty	1 × 900 ml
Rapid Activator	1 × 40 ml
Dosing Spoon	1 pc

Rapid Soft System-Pack	4585
Putty	1 × 900 ml
Rapid Activator	1 × 40 ml
Dosing Spoon	1 pc
Liner	1 × 150 ml
Liner Activator	1 × 18 ml
Dosing Syringe	1 pc
Applicator	1 pc
Mixing Rod	1 pc

Rapid Liner	4540
Liner	1 × 150 ml
Liner Activator	1 × 18 ml
Dosing Syringe	2 pcs
Applicator	1 pc
Mixing Rod	1 pc

Rapid Liner without applicator	4541
Liner	1 × 150 ml
Liner Activator	1 × 18 ml
Dosing Syringe	2 pcs

Rapid Activator	4530
Activator	1 × 40 ml

Rapid Soft	4590
Putty	1 × 900 ml
Rapid Activator	1 × 40 ml
Dosing Spoon	1 pc

Rapid Liner Activator	4550
Liner Activator	1 × 18 ml

Rapid Liner Eco	4547
Liner	3 × 150 ml
Liner Activator	3 × 18 ml

Coltoflax / Coltex



Coltoflax/Coltex offers you one putty material and 4 different materials in tubes. That means: you are completely free to choose the impression technique that suits you best. Easy handling characteristics, excellent physical properties and consistent quality are the features that guarantee successful impression results with Coltoflax/Coltex.

Coltoflax (Base und Activator) 4015		Coltoflax Activator Paste 4046	
Single Package	1 × 950 ml	Coltoflax mix	1 × 40 ml
Coltex extrafine 4115		Coltex extrafine mix 4142	
Single Package	1 × 160 ml	Coltex extrafine mix	1 × 20 ml
Coltex fine 4165		Coltex mix 4392	
Single Package	1 × 165 ml	Coltex mix	1 × 40 ml
Coltex medium 4215		Coltex compact 4365	
Single Package	1 × 165 ml	Single Package	1 × 165 ml

Pressure Spot Indicator

The polysiloxane-based material for the location of high spots in dentures.

PSI 4440		PSI CATALYST 4445	
Catalyst	1 × 20 ml	Catalyst	1 × 20 ml
Base	1 × 55 ml		



Accessories see page 25

Speedex



Speedex Universal Activator	4990
Single Package	1 × 60 ml

Rapid



Rapid Activator	4530
Activator	1 × 40 ml

Rapid Liner Activator	4550
Liner Activator	1 × 18 ml

Rapid Liner Eco	4547
Liner	3 × 18 ml

Coltex / Coltoflax



Coltex mix	4392
Coltex mix	1 × 40 ml

Coltex extrafine mix	4142
Coltex extrafine mix	1 × 20 ml

Coltoflax Activator Paste	4046
Coltoflax mix	1 × 40 ml

PSI CATALYST



PSI CATALYST	4445
Catalyst	1 × 20 ml

Gingiva Reproduction
Lab silicones

Laboratory / Practice



GI-MASK Automix New Formula



GI-MASK Automix New Formula provides accurate reproduction of soft tissue structure. The A-Silicone based gingival mask provides all information for implant supra-structures and frameworks. The aesthetic colouring of the gingival mask supports you to imagine the clinical situation.

Starter-Kit 8060	
GI-MASK New Formula cartridges	2 × 50 ml
GI-MASK Universal Separator	1 × 50 ml
Mixing Tips Yellow	12 pcs
Oral Tips Yellow	12 pcs
Trimmer for Silicones	1 ps

Accessories	
Mixing Tips Yellow	40 pcs 6550
Oral Tips Yellow	100 pcs 6555
Dispenser 50 ml/75 ml	1 pc 6900
Trimmer for Silicones	1 pc 8075

Refill 8065	
GI-MASK New Formula cartridges	2 × 50 ml
Mixing Tips Yellow	12 pcs
Oral Tips Yellow	12 pcs

Separator 8000	
GI-MASK Universal Separator	1 × 50 ml

GI-MASK



The GI-MASK is the silicone-based gingival mask, for precise reproduction of gingival contours around the margins, it maintains its accuracy for days and right up to the moment until the restoration is finished.

Starter-Kit 8030	
GI-MASK Base	1 × 150 ml
GI-MASK Activator	1 × 18 ml
GI-MASK Universal Separator	1 × 50 ml
Mixing Tips	20 pcs
Mixing and application accessories	

Refill Kit 8037	
Base	1 × 150 ml
Activator	1 × 18 ml

Activator 8036	
GI-MASK Activator	1 × 18 ml

Single Package 8035	
GI-MASK Base	1 × 150 ml
GI-MASK Activator	1 × 18 ml
Mixing Tips	20 pcs
Mixing and application accessories	

Separator 8000	
GI-MASK Universal Separator	1 × 50 ml

Lab-Putty

Lab-Putty is the outstanding polysiloxane laboratory modelling product material with 62 – 67 Shore A for model repairs, isolation and denture heat protection, keys and block outs and matrixes for formation of general occlusion and functional patterns.

Lab-Putty 1.35 kg 8805	
Lab-Putty Base	1 × 900 ml
Lab-Putty Activator	1 × 40 ml
Dosing spoon	1 pc

Lab-Putty 7.5 kg 8815	
Lab-Putty Base	1 × 5000 ml
Dosing spoon	5 pcs

Lab-Putty Activator 8840	
Activator	1 × 40 ml

Lab-Putty hard

A smooth acrylic surface is guaranteed with the use of Lab Putty hard for relining, keys and repair models. Separate isolation is eliminated. Its high heat-resistance (300° C) and perfect dimensional stability makes it suitable for soldering models (90 Shore A).

Lab-Putty hard 1.8 kg 8882	
Lab-Putty hard Base	1 × 900 ml
Activator	1 × 40 ml
Dosing spoon	1 pcs

Lab-Putty hard 5 kg 8880	
Lab-Putty hard Base	1 × 2600 ml
Dosing spoon	5 pcs

Lab-Putty Activator 8840	
Activator	1 × 40 ml

Wax

Laboratory / Practice

HYGENIC u-shaped occlusal rim wax

Recessed base aids adaption to base plate. Can be reshaped at room temperature to fit individual arch.

HYGENIC u-shaped occlusal rim wax

Standard Package	21 pcs	H04030
Laboratory Package	100 pcs	H00822

HYGENIC bite-wafers

This bite-mask contains a thin aluminium foil within two wax layers. Laminated, blue.

HYGENIC bite-wafers

Double	24 pcs	H00825
--------	--------	--------

U-shaped and designed for a fast precise retain of the situation.

HYGENIC bite-wafers

Yellow, soft	50 pcs	H00839
Green, hard	50 pcs.	H03365

HYGENIC medium-soft no. 3 pink wax

Easily softened and cooled to minimize shrinkage. Soft modeling.

HYGENIC medium-soft no. 3 pink wax

450 g	H00806
2.25 kg	H00812

HYGENIC red wax

This wax shows the same consistency as the medium-soft no. 3 pink wax.

HYGENIC red wax

450 g	H00805
2.25 kg	H00811

HYGENIC extra tough wax

Durable, all-purpose wax that is a carefully prepared blend of exclusive waxes. Tough, pliable and sufficiently tacky to hold teeth well. Takes polish and boils out.

HYGENIC extra tough wax

450 g	H00803
2.25 kg	H00809

HYGENIC yellow bite wax

Economical alternative to Beeswax with many of the same characteristics.

HYGENIC yellow bite wax

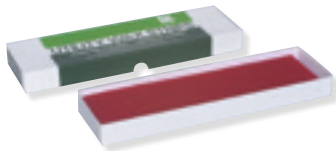
450 g	H00807
2.25 kg	H00813

HYGENIC square wax ropes

Sticky, soft and narrow wax ropes.

HYGENIC square wax ropes

4.8 mm ² × 279 mm Red	44 pcs	H00819
4.8 mm ² × 279 mm White	44 pcs	H00820

HYGENIC round wax strips

Shaped in round strips, used for preserving the periphery roll and extending and building up impression trays and post-damming.

HYGENIC round wax strips

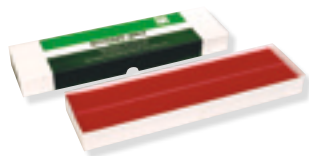
4.8 mm ² × 279 mm Red	80 pcs	H00817
4.8 mm ² × 279 mm White	80 pcs	H00818

HYGENIC wax sticks

Readily formed without heating, sticks are softer and tackier than „Round Wax Strips“ to minimize tissue displacement.

HYGENIC wax sticks

Scented	48 pcs	H00826
---------	--------	--------

HYGENIC boxing wax

Designed for boxing impressions, withstands extreme heat given off by dental stone during setting.

HYGENIC Boxing wax, regular

1.6 mm × 38.4 mm × 305 mm 450 g	H00815
1.6 mm × 38.4 mm × 305 mm 2.25 kg	H00837

HYGENIC boxing waxes, extra fine

1 mm × 38.4 mm × 305 mm 450 g	H00816
1 mm × 38.4 mm × 305 mm 2.25 kg	H00838

HYGENIC beeswax

Made of pure, natural beeswax with no additives. Wax softens easily under hot water.

HYGENIC beeswax

225 g	48 pcs	H00832
450 g	48 pcs	H00833
2.25 kg	48 pcs	H00834

HYGENIC orthodontic tray wax

Sticky, soft and narrow wax ropes.

HYGENIC Orthodontic Tray Wax Sticks

White	48 pcs	H00827
-------	--------	--------



CH **Coltène/Whaledent AG**
Feldwiesenstrasse 20
9450 Altstätten / Switzerland
T + 41 71 757 53 00
F + 41 71 757 53 01
info.ch@coltene.com

CN **Coltene/Whaledent China Trading Co. Ltd.**
Rm. 1103/1104, Bldg. B2, Wu Dong Plaza
#9 Chegongzhuang Street, West District
Beijing 100044 / P.R. China
T + 86 10 6212 3251
F + 86 10 6212 3252
info.cn@coltene.com

IT **Coltène Italia S.r.l.**
c/o Polo Tecnologico della Brianza
Via Alessandro Volta, 94 - Cond. Bianchi
20832 Desio (MB) / Italy
T + 39 0362 62 67 32
F + 39 0362 63 25 80
info.it@coltene.com

DE **Coltène/Whaledent GmbH + Co. KG**
Raiffeisenstraße 30
89129 Langenau / Germany
T + 49 7345 805 0
F + 49 7345 805 201
info.de@coltene.com

FR **Coltène/Whaledent s.a.r.l.**
75 Boulevard Marie et Alexandre Oyon
72058 Le Mans Cedex 2 / France
T + 33 2 43 39 30 30
F + 33 2 43 39 30 40
info.fr@coltene.com

UK **Coltène/Whaledent Ltd.**
The President Suite
Kendal House, Burgess Hill
Victoria Way
West Sussex, RH15 9NF / UK
T + 44 1444 235486
F + 44 1444 870640
info.uk@coltene.com

US **Coltène/Whaledent Inc.**
235 Ascot Parkway
Cuyahoga Falls, Ohio 44223 / USA
T + 1 330 916 8800
F + 1 330 916 7077
info.us@coltene.com

IN **Coltène/Whaledent Private Ltd.**
106/107, Hallmark, Vasant Oscar
L.B.S Marg, Mulund West
Mumbai 400080, Maharashtra / India
T + 91 22 25923626
F + 91 22 25623165
info.in@coltene.com

BR **Vigodent SA Indústria e Comércio**
Rua Pesqueira 26 Bonsucesso
Rio de Janeiro CEP 21041-150 / Brazil
T + 5521 3865 5600
F + 5521 2280 8411
sac@vigodent.com.br

© 2014 Coltène/Whaledent AG – www.coltene.com



COLTENE

